



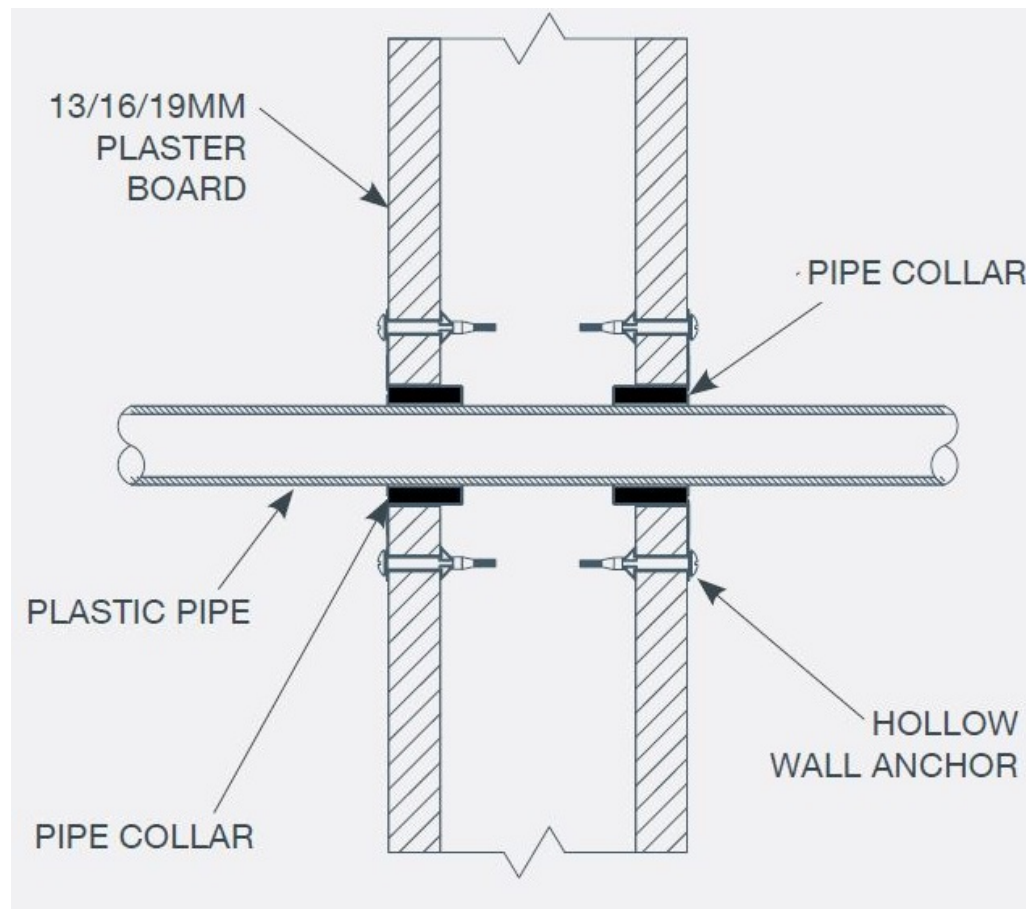
FIRESTOP CENTRE

Authorised New Zealand Distributor
Ph (09) 483 4000 www.firestopcentre.co.nz

Allproof Low Profile Fire Collar Plastic Pipe through a Plasterboard Wall Single Layer 13mm, 16mm or 19mm Fire Board or 13mm Standard Board Collar Inserted Inside the Wall

INSTALLATION INSTRUCTIONS:

1. Ensure substrate around the service is flat and free from obstructions.
2. Open pipe collar and position around the service.
3. Slide tab through slot in pipe collar and fold back 180° to secure.
4. Slide the collar into the wall and secure using metal hollow wall anchors or dog pan head screws (see Pg 2) fixed directly into the plasterboard. Do not use fixings which rely on plastic or nylon components for grip.
5. Do not apply sealant - the collar must remain open to the fire for the intumescent to activate correctly.



BRANZ Appraised
Appraisal No.1088 [2019]

As a part of our policy of on-going product development and testing, we reserve the right to modify, alter or change product specifications without giving notice. All information contained in this document is given in good faith and is provided for guidance only. Any drawings provided are for illustrative purposes only. As Firestop Centre has no control over the methods or competence of installation and of prevailing site conditions, no warranties, expressed or implied, is intended to be given as to the actual performance of the product mentioned or referred to herein and no liability whatsoever will be accepted for any loss, damage or injury arising from the use of the information given.

For all technical details on the products specified please refer to the technical data sheets that can be found on www.firestopcentre.co.nz

Signed and approved:



BRANZ Appraisal 1008
Technical Manual - Plumbing
Pages 19-23
AS1530.4-2014 AS4072.1-2005

System ID# FC738

Products	Allproof Low-Profile Fire Collar
Application	Fire stopping of plastic pipe in single layer plasterboard wall
Construction	Minimum wall thickness 90mm with single layer 13,16,19mm board each side

Fire Classification:

See Page 2 for details of sizes, apertures, fixings and FRR for the following pipes:

In 13mm Fire Board:

PVC 40mm diam
Polybutylene 20mm diam
PEX 20mm and 25mm diam
PP-R 25mm diam

In 13mm Standard Board:

PVC 40mm diam

In 16mm Fire Board:

PEX 16 - 25mm diam
PEX/AL/PE 25mm diam

In 19mm Fire Board:

PVC 40mm and 100mm diam
PP-R 25mm diam
PEX 25mm diam
PB 22mm diam

ALLPROOF
INDUSTRIES

Allproof Industries Ltd
17 Bay Park Place
Beach Haven, AK 0626

Sheet size: A4	Drawn date & no: 28/5/25
Scale: NTS	Drawn by: G.P

13MM PLASTERBOARD WALL TEST RESULTS:

NOMINAL PIPE SIZE (MM)	NOMINAL PIPE WALL THICKNESS (MM)	PRODUCT CODE	PENETRATION HOLE SIZE (MM)	PLASTERBOARD WALL FRL*	REPORT NUMBER
PLASTIC PIPE - IN WALL					
40 PVC*	2.0	ALLFC40	70	-/60/45	143281-001
40 PVC*	Socket	ALLFC40	70	-/60/60	147932
20 PB**	2.2	ALLFC25	45	-/60/60	148459
20 PEX**	2.2	ALLFC25	45	-/60/60	148459
25 PEX**	2.8	ALLFC25	45	-/60/-	148459
25 PP-R*	4.0	ALLFC25	45	-/60/45	5572

* Fixing: Hollow wall anchors

** Fixing: 6.5mm x 32mm dog pan head screw anchors

Tested using a 64mm wide steel stud with a single layer of 13mm fire rated plasterboard on each side of the frame. A total wall thickness of 90mm. Fire collars are fixed directly into plasterboard - not fixed into framing or studs in wall. Fire rated sealant is applied in the space between the pipe and plasterboard on both the exposed and unexposed face.

STANDARD NON-FIRE RATED 13MM PLASTERBOARD WALL TEST RESULTS:

NOMINAL PIPE SIZE (MM)	NOMINAL PIPE WALL THICKNESS (MM)	PRODUCT CODE	PENETRATION HOLE SIZE (MM)	PLASTERBOARD WALL FRL*	REPORT NUMBER
PVC PLASTIC PIPE - IN-WALL					
40	2.4	ALLFC40	70	-/30/30	13088

Tested using a 92mm wide steel stud with a single layer of 13mm standard non-fire rated plasterboard on each side of the frame. A total wall thickness of 118mm. Fire collars are fixed using hollow wall anchors directly into plasterboard - not fixed into framing or studs in wall. Fire rated sealant is applied in the space between the pipe and plasterboard on both the exposed and unexposed face.

16MM PLASTERBOARD WALL TEST RESULTS:

NOMINAL PIPE SIZE (MM)	NOMINAL PIPE WALL THICKNESS (MM)	PRODUCT CODE	PENETRATION HOLE SIZE (MM)	PLASTERBOARD WALL FRL*	REPORT NUMBER
PEX PIPE - IN WALL					
16	2	ALLFC25	45	-/90/90	200379
20	3	ALLFC25	45	-/90/60	200379
25	4	ALLFC25	45	-/90/90	200379
OTHER PLASTIC PIPE - IN WALL					
25 PEX/AL/PE	4	ALLFC25	30	-/90/60	200379

Tested using a 64mm wide steel stud with a single layer of 16mm fire rated plasterboard on each side of the frame. A total wall thickness of 96mm. Fire collars are fixed using M8 hollow wall anchors to suit 10-16mm plasterboard- not fixed into framing or studs in wall. Fire rated sealant is applied in the space between the pipe and plasterboard on both the exposed and unexposed face.

19MM PLASTERBOARD WALL TEST RESULTS:

NOMINAL PIPE SIZE (MM)	NOMINAL PIPE WALL THICKNESS (MM)	PRODUCT CODE	PENETRATION HOLE SIZE (MM)	PLASTERBOARD WALL FRL*	REPORT NUMBER
PLASTIC PIPE - IN WALL					
40 PVC	2.2	ALLFC40	70	-/120/90	4101
100 PVC	3.3	ALLFC100	150	-/45/45	4101
25 PP-R (SDR 7.4)	3.7	ALLFC25	45	-/120/90	4101
25 PEX	3.7	ALLFC25	45	-/120/90	4101
22 PB	2.2	ALLFC25	45	-/120/90	4101

Tested using a 92mm wide steel stud with a single layer of 19mm fire rated plasterboard on each side of the frame. A total wall thickness of 130mm. Fire collars are fixed using hollow wall anchors directly into plasterboard - not fixed into framing or studs in wall. 25mm fire collars tested in the wall penetration not exposed outside of wall.